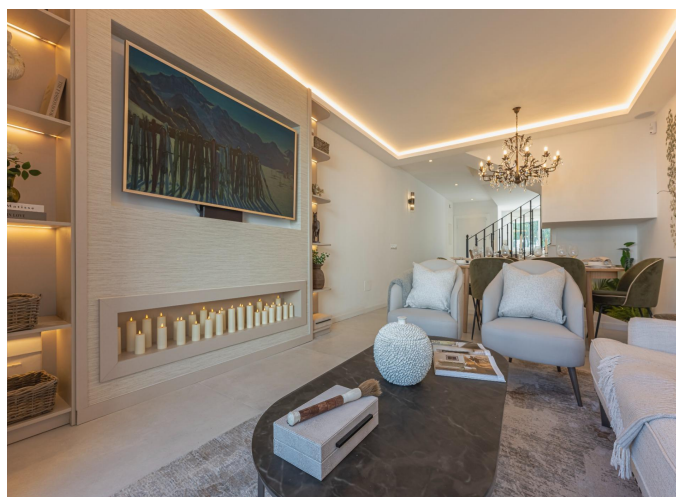


## Townhouses and semi-detached houses for sale in Marbella

4 Bedrooms | 4 Bathrooms | 147 m<sup>2</sup> Interior | 15 m<sup>2</sup> Terraces | Garage Yes |



### Property Description

Four-bedroom contemporary residence for sale in Aloha Golf distributed in three floors, generous interior and terrace spaces, East facing orientation and open views across landscaped communal areas within the established URB Aloha Golf community. Designed for practical everyday living as well as seasonal enjoyment, Townhouse Chelsea combines architectural quality with a functional layout that priorities light, comfort, and privacy.

Each of the four bedrooms benefits from its own bathroom, complemented by a guest toilet, creating an ideal setting for families or owners who regularly host visitors.

Created by a respected architect and delivered by an experienced builder, the property reflects careful planning throughout. The interior distribution maximises usable space while maintaining a natural flow between living areas. An open-plan kitchen connects seamlessly with the dining and lounge zones, allowing natural light to travel through the home via large openings. Contemporary furnishings and carefully selected materials enhance the calm atmosphere without sacrificing practicality. Built using high-quality finishes, the townhouse also incorporates modern conveniences including an alarm system, automatic irrigation, and a barbecue area designed for outdoor

entertaining.

Outdoor living plays an important role in the design. Terraces extend the main living areas and overlook the immaculately maintained communal pool, while the west-facing position allows residents to enjoy long afternoons of sunlight and evening sunsets. Located within a gated environment with communal parking, the residence offers both privacy and security alongside a welcoming community atmosphere.

The urbanisation Aloha Golf forms part of the well-known Golf Valley area of Nueva Andalucía, recognised for its peaceful residential character and low-density planning. The surroundings are defined by landscaped avenues, villas, and boutique townhouse communities influenced by Mediterranean and contemporary architectural styles. Golf remains central to the lifestyle here, with renowned courses such as Aloha Golf Club, Real Club de Golf Las Brisas, and Los Naranjos Golf Club all located within minutes, attracting residents who value open green surroundings and a relaxed pace of living.

Daily amenities are exceptionally convenient. Dining options nearby include El Banco for casual meals, panoramic terrace dining at Magna Café, and lively evenings at Mosh Fun Kitchen. Shopping is centred around Centro Plaza, known for boutiques, cafés, and weekly markets, while luxury retail and department shopping can be found at El Corte Inglés close to Puerto Banús.

Families benefit from respected international education options including Aloha College and Svenska Skolan Marbella, both easily accessible by car. Leisure activities extend beyond golf, with racquet sports available at Aloha Tennis Club and a village-style social setting at Aloha Pueblo offering restaurants and local services.

The neighbourhood combines tranquillity with strong connectivity. Beaches are reached within a short drive, while nearby road access links efficiently to surrounding coastal areas and Málaga Airport for international travel. Public transport routes and taxi services operate regularly through the area, supporting both permanent residents and seasonal owners.

This townhouse represents a balanced opportunity for buyers seeking a contemporary property for sale in a secure residential environment. Recent renovated and in a location defined by lifestyle convenience, established amenities, and sporting facilities, the home offers long-term value together with immediate comfort in one of the most consistently sought-after residential communities in Golf Valley.