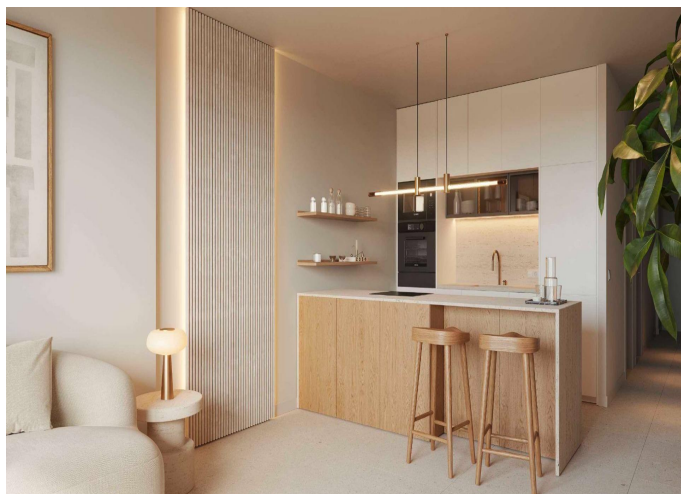
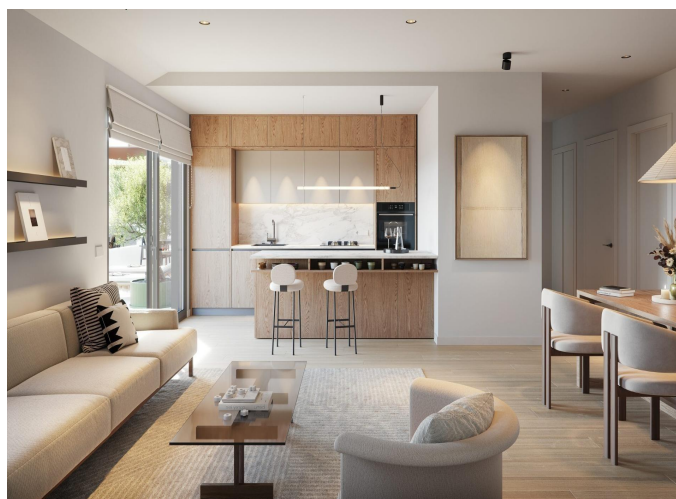


## Penthouse for sale in Fuengirola

2 Bedrooms | 2 Bathrooms | 146 m<sup>2</sup> Interior | 53 m<sup>2</sup> Terraces | Garage Yes | Pool Yes |



### Property Description

The first development in the new area of La Loma, the fastest-growing area of Fuengirola. Next to the Great Park of La Loma, with over 30,000 m<sup>2</sup> of green spaces where you can walk, cycle, exercise, or simply enjoy this unique environment.

Just 5 minutes from a traditional espeto at Los Boliches Beach and 10 minutes from the town centre or the Marina.

Are you travelling or returning home? In just 17 minutes, you can reach Málaga International Airport. And in less than half an hour, you can enjoy Marbella, the mecca of luxury on the Costa del Sol.

A total of 77 apartments, including 2 and 3 bedroom homes and 6 exclusive penthouses. Designed to offer comfort in a unique environment, all properties are sea-facing. Every unit Includes a parking space and storage room.

A secure, gated community for the whole family, with CCTV surveillance and private access to all exclusive amenities.

The apartments feature 2 and 3 bedrooms and stand out for their large windows, which provide access to the terrace, blurring the line between indoor and outdoor spaces. The daytime area

includes an open-plan kitchen connected to the living room, equipped with an elegant island that serves as a breakfast bar.

Thanks to its orientation towards the pool, you can enjoy unobstructed views and a seamless connection with the outdoors.

The master bedroom, with an en-suite bathroom and a spacious walk-in wardrobe, is also oriented towards the pool in a southeast direction, allowing you to wake up each morning to the stunning colours of the Costa del Sol sunrise.

The secondary bedrooms are located on the opposite side of the building, offering greater privacy for other family members or, if you work from home, a very quiet office space.

You will receive sunlight from morning until noon, providing a bright and warm atmosphere without being overwhelming. This enhances the feeling of spaciousness in the home, creating a more welcoming space.

Thanks to the abundant natural light, the need for artificial lighting during the day is reduced.

Additionally, in winter, the sun that shines into the home helps to heat it naturally, decreasing the use of heating and reducing energy consumption, which results in a lower electricity bill and a more sustainable home.

One of the best orientations to maintain a pleasant climate inside the home. In winter, the morning sunlight efficiently warms the house, preventing extremely cold temperatures. In summer, as it doesn't receive direct sunlight during the hottest hours of the afternoon, the environment remains cooler, which minimises the need for air conditioning and improves thermal comfort.

Enjoy your terrace throughout the day. In the morning, it allows you to have breakfast outdoors with natural light without excessive heat. During midday and afternoon, the shade begins to spread, creating a cooler and more pleasant environment for gatherings, meals, or moments of relaxation without enduring the intensity of the sun.

If you enjoy gardening or having plants at home, southeast is a perfect orientation. Many indoor and outdoor species thrive better with indirect or moderate light, avoiding excessive exposure to the afternoon sun.

Enjoy unique sunrises from your terrace or through the large windows of your home. The morning light creates spectacular landscapes, perfect for those who love waking up to clear, bright views.

The layout of the homes already offers privacy and tranquility, but with a southeast orientation, thermal comfort and brightness are maximised, which positively influences mood and overall well-being. It is proven that natural light improves productivity, rest, and overall health.