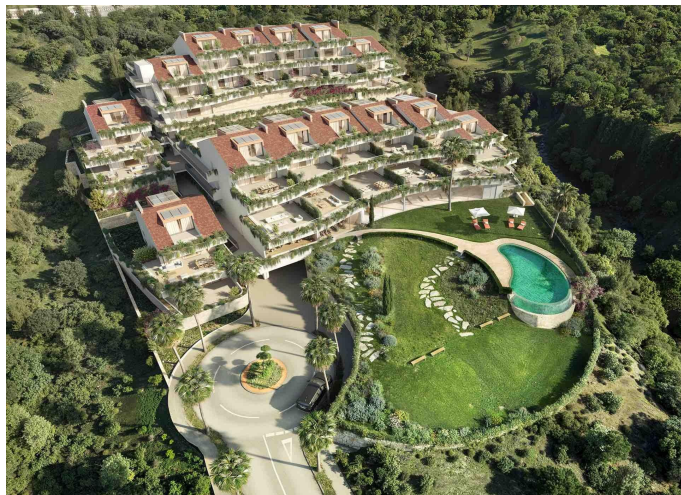
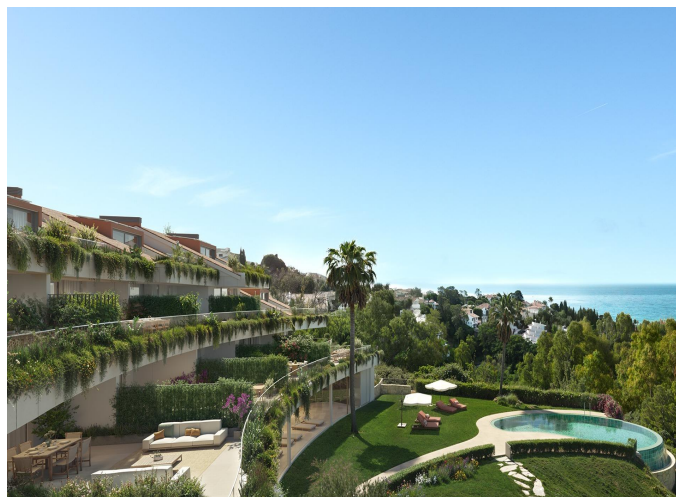


## Apartment for sale in Benalmádena

3 Bedrooms | 2 Bathrooms | 256 m<sup>2</sup> Interior | 72 m<sup>2</sup> Terraces | **Garage** Yes | **Pool** Yes |



### Property Description

We present this exclusive collection of 28 residences located on the Costa del Sol, in Málaga. This premium residential complex enjoys a privileged location just steps from Torremuelle Beach, with direct access to the shore, and only minutes from Torrequebrada Golf Course and Puerto Marina. Perfectly situated on the Costa del Sol at the foot of the Mijas mountains, it offers an exceptional setting.

Surrounded by lush greenery, yet within easy reach of the vibrant, thriving atmosphere of the area, this residential development offers the ideal place to truly live life to the fullest.

This exclusive residential community offers outstanding amenities, including a fully equipped gym, swimming pool, and a social/coworking lounge, as well as private parking and storage rooms. It stands out for its modern and elegant design, the work of the prestigious SOB ARQUITECTOS Architecture Studio and the interior design by ISMAEL MÉRIDA, in addition to the use of top-quality materials. These homes are designed to satisfy the most demanding residents.

Positioned on gently sloping terrain, every residence is oriented towards the coast, offering breathtaking, unobstructed sea views, with direct access to the beach through a landscaped public park right in front.

Bathed by the Mediterranean Sea and blessed with over 325 days of sunshine each year, the Costa del Sol is a true paradise, offering beaches to suit every taste. Here, you can enjoy an outdoor lifestyle at a relaxed and healthy pace, with endless opportunities for sports, seaside strolls, and walks surrounded by nature.

With more than 70 golf courses, the Costa del Sol is Europe's premier golfing destination, while also offering a wide range of other activities such as tennis, water sports, hiking, and more.

The region's rich gastronomy can be savored in its many local restaurants, offering everything from fresh seafood to traditional tapas, often served on charming terraces overlooking the sea. As night falls, the area comes alive with vibrant nightlife, featuring a variety of bars, live entertainment, and exclusive clubs.

Benalmádena is home to the prestigious Puerto Marina, internationally awarded for its innovative design and recognized as a leading destination for nautical activities and leisure. Its unique charm attracts people from all over the world, many of whom have turned a simple visit into a new life, making this exceptional setting their permanent home.

The town offers first-class healthcare, excellent international schools, and a rich variety of social and sports activities. Combined with excellent transport links, Benalmádena truly stands out as the ideal place to live.

Discover a residential enclave where modern living meets Mediterranean beauty. This exclusive development perfectly blends the natural beauty of the Mediterranean coastline with contemporary architecture and exceptional amenities. Positioned in front of a public park, it offers residents unparalleled sea and nature views.

Within just a three-minute walk, residents can reach the beach, while a wide range of services and conveniences are available in the immediate surroundings. The nearby train station provides easy connections to Málaga and other cities along the Costa del Sol, and major roadways offer quick access to the airport and key tourist destinations.

In this residence, security is a top priority. Residents also enjoy outstanding communal areas, including indoor and outdoor swimming pools, a fully equipped gym, social/coworking spaces, and expansive green areas. In addition, private parking and storage rooms offer valuable extra space for any need.

Residents can enjoy peace of mind in a safe and protected environment. The community features an outdoor swimming pool surrounded by comfortable sun loungers and shaded areas — the perfect spot to relax and enjoy the sun and fresh air. Additionally, a heated indoor pool provides an ideal space for swimming or unwinding throughout the year.

Stay active in the fully equipped gym, or take a stroll through the extensive green areas that invite you to relax, walk, and reconnect with nature.

A modern social and coworking space has also been designed to offer an inspiring and functional environment, perfect for working or studying with complete comfort.

The homes are a true showcase of innovative design and quality living. Thoughtfully designed layouts maximize space, creating functional and comfortable interiors. Thanks to their carefully planned south-facing orientation, each residence is flooded with natural light, creating warm and

inviting living spaces throughout the day.

Every home features a spectacular terrace that transforms your residence into the perfect balcony overlooking paradise, with breathtaking views of the Mediterranean. It's the ideal setting to create lasting memories and share unforgettable moments with your loved ones.