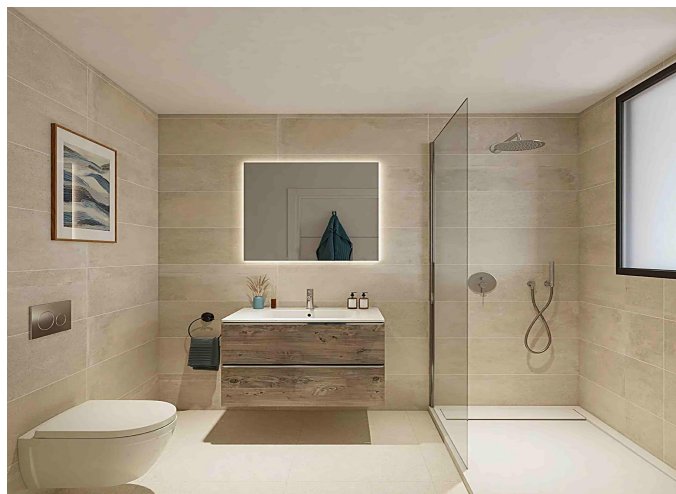
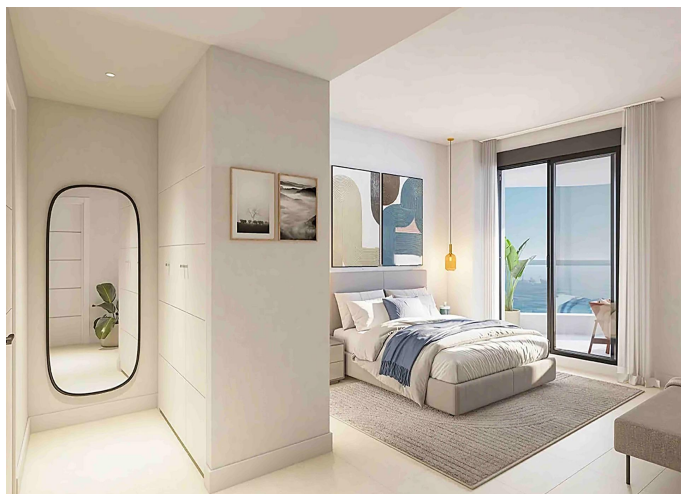


Apartment for sale in Benalmádena

2 Bedrooms | 2 Bathrooms | 106 m² Interior | 32 m² Terraces | **Garage** Yes | **Pool** Yes |



Property Description

Imagine waking up every day to a spacious and bright space with sea views. Our project of 74 2- and 3-bedroom multi-family homes with garages and storage rooms offers you the opportunity to live in a privileged setting. With spacious terraces and common areas with gardens and a pool, this new residential development is the perfect place to relax and enjoy.

Located in Torremuelle, Benalmádena, next to Parque Misterioso, this enclave offers quick connections to the Mediterranean Highway and the RENFE commuter train station. Just minutes from the beach, leisure areas, and the charming towns of Fuengirola and Benalmádena, you'll live in a peaceful and natural setting, with large green areas that invite you to relax.

With sea views, a privileged orientation, spacious terraces, and an incomparable natural setting, it's also an ideal place for your second home.

Contemporary architecture, combined with bright, open spaces, creates an ideal home for those seeking quality of life in a privileged setting. The experience is completed with communal areas that include perfectly maintained gardens and swimming pools where you can relax while gazing at the

sea in the foreground.

The project is located in an elevated position that offers spectacular panoramic views of the Mediterranean Sea, creating a unique environment that combines serenity and exclusivity. Prestigious educational centers, medical centers, supermarkets, and shopping areas are nearby. This balance of tranquility and accessibility makes it a perfect place to establish your home.