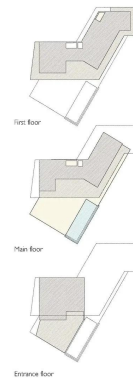


Luxury Villa for sale in Benahavis

5 Bedrooms | 5 Bathrooms | 1186 m² Interior | 522 m² Terraces | Garage Yes |



FLOOR SURFACE HOUSE	
First floor	14631 m ²
Main floor	11248 m ²
Entrance floor	14476 m ²
TOTAL	40355 m²
FLOOR SURFACE COVERED TERRACES	
First floor	14837 m ²
Main floor	11270 m ²
Entrance floor	16750 m ²
TOTAL	36757 m²
FLOOR SURFACE UNCOVERED TERRACES	
First floor	433 m ²
Main floor	17232 m ²
Entrance floor	228 m ²
TOTAL	19493 m²
POOL SURFACE	
Lower floor	2676 m ²
TOTAL	2676 m²
TOTAL FLOOR SURFACE	118669 m²
TOTAL PLOT SIZE	221000 m²

These plans, areas and other dimensions are relative only and subject to change, construction tolerances and differences in the field with your project. If construction improvement we reserve the right to alter this layout, building style finishing and specifications at any time without notice.

Property Description

Stunning villa embedded in the mountain foothills on an elevated position with a strategic and playful distribution of spaces and living areas. With its back to the mountain and frontal part boasting open views, it showcases a singular approach to design and development.

The structure and outside spaces are oriented towards the Mediterranean Sea, the castle of Monte Mayor, and the emerald valley below. From the ample terraces and integrated outside lounge area, this villa offers a protected atmosphere.

A holistic approach to development that is uncompromised in its commitment to enduring principles of sustainability, design and quality in every aspect of each project.

Inspired by the rugged contours of the mountainous landscape and the temperate seasons of the Mediterranean climate, the exclusive villa was founded as a concept for living in harmony with nature.

Central to the philosophy is the principle of maximum integration, whereby the villa structure

adapts to the topography of the land. Rather than imposing upon the terrain, the villas adhere closely to the mountain's shape and slope, allowing them to blend harmoniously with their surroundings. The villa's natural green landscape is the garden, which consists of plants selected for their drought resilience and low maintenance requirements, contributing to biodiversity while reducing water demand.

Strategically placed internal garden patios and variations on the ancient 'thermal chimney' element generate internal airflow to keep the villa naturally cool in the hot summer months. These green patios not only enhance indoor air quality and comfort but also provide habitat for flora, strengthening the connection to nature. Calculated overhangs characterize each villa, serving both as attractive architectural features and clever shading elements. They provide protection from the high summer sun – and allow the low winter sun to warm the villa's living spaces.

Specially constructed green water-retaining roofs capture and absorb rainwater to avoid erosion and support the nourishment of the rooftop flora. Water drainage and ventilation around the embedded structure ensure a solid and insulated home. In a region known for its sunny climate, solar panels on the upper green roof harness the renewable energy source.

Exceptional skill and dedication is applied to each step in the development process – including design, construction and installations. It's a rigorous approach and a demanding method that yields the best result. The maker's hand will forever remain embedded in each project. Each villa tells an authentic story of a unique and timeless project.